



LD PRO AUDIO
SYSTEMS IN MOTION

workhorse.

STINGER® G3 SERIES
MULTIFUNCTIONAL PA SPEAKERS
& SUBWOOFERS



workhorse

noun [C] UK /wɜ:k.hɔ:s

“A dependable performer; a steady, responsible worker who assumes a heavy workload.”



- HIGH POWER BASS REFLEX PA SUBWOOFERS WITH CARDIOID ARRAY PRESETS
- UP TO 800 W RMS POWER AND 134 DB MAX SPL
- APPLICATION PRESETS FOR QUICK FREQUENCY RESPONSE CONTOURING
- LD SYSTEMS DYNIX® DSP TECHNOLOGY FOR DISTORTION-FREE PERFORMANCE
- BEM OPTIMIZED HF WAVEGUIDE FOR UNIFORM COVERAGE
- 36 MM DUAL-TILT POLE MOUNT FOR 0° OR 5° MOUNTING ANGLES
- BIRCH PLY CABINET WITH ULTRA-RUGGED POLYUREA FINISH

STINGER® G3 SERIES

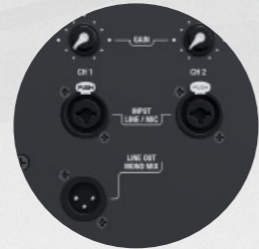
MULTIFUNCTIONAL PA SPEAKERS & SUBWOOFERS

High-performance workhorse loudspeakers for **outstanding sound reinforcement** - that was our goal creating the **STINGER G3 Series**. We've combined **optimized components** and **smart details** in active and passive models to ensure **exceptional reliability and ease of use**. **STINGER** multi-purpose systems and subwoofers are your go-to choice for **affordable pro audio quality**. It's time you saddled up!



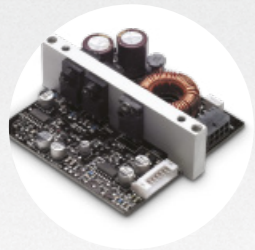
RE-DEFINING **MULTITALENT**

Application presets enable instant frequency response contouring.



INPUT **VARIETY**

Dual line and mic level inputs add application versatility to active STINGER G3 models.



DYNX® DSP-TECHNOLOGY

Including multiband limiter and crossover functions, LD Systems' DynX DSP technology ensures perfect time alignment and distortion-free performance even at maximum levels.



TAKE **AIM**

LD Systems' Dual-Tilt pole mount allows 0° and 5° orientation angles.



ENGINEERED FOR **PERFECTION**

Designed with BEM modeling of sound radiation and propagation, the HF waveguide reduces floor and ceiling reflections, effectively eliminates side lobes and achieves a controlled uniform coverage pattern.



BUILT TO LAST

Ultra tough impact resistant polyurea coating provides unrivaled durability.



ALL MODELS EQUIPPED WITH **POWERCON COMPATIBLE CONNECTORS**

4 x HEAVY-DUTY HANDLES

2 x M20 SPEAKER POLE INSERTS

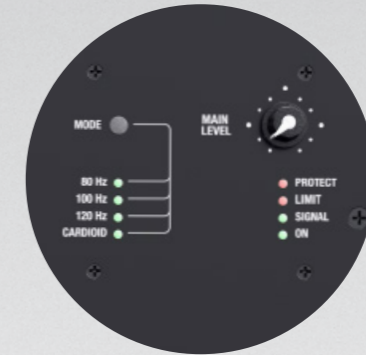
BUILT TO LAST

Ultra tough impact resistant polyurea coating provides unrivaled durability.



INSTANT CARDIOID SUB ARRAY CONFIGURATION

Easily configure cardioid arrays with the subwoofers' built-in presets for consistent bass coverage and less onstage sub energy.



2 x INTEGRATED KEEPER PLATES FOR STINGER CASTOR BOARD ATTACHMENT

SYSTEM INTEGRATION MADE EASY

ACTIVE
Quickly integrate powered STINGER G3 Subs into your system with convenient 80, 100 and 120 Hz low-pass presets.

PASSIVE
The passive subwoofers' CH 2 OUTPUT provides a signal and power feed to passive satellites without any additional adapter.



MADE FOR PROFESSIONALS

The STINGER G3 subwoofers have been designed for touring and rental professionals. They are equipped with PowerCON compatible connectors and feature a ultra tough impact resistant polyurea coating for unrivaled durability.



TECHNICAL SPECIFICATIONS

SPECIFICATIONS SPEAKERS:

Art. No.:	LDEB82G3	LDEB282G3	LDEB102G3	LDEB122G3	LDEB152G3	LDEB82AG3	LDEB282AG3	LDEB102AG3	LDEB122AG3	LDEB152AG3
Product type:	PA loudspeaker	PA loudspeaker	PA loudspeaker	PA loudspeaker	PA loudspeaker	PA loudspeaker	PA loudspeaker	PA loudspeaker	PA loudspeaker	PA loudspeaker
Type:	passive	passive	passive	passive	passive	active	active	active	active	active
Low/mid driver dimensions:	8"	2 x 8"	10"	12"	15"	8"	2 x 8"	10"	12"	15"
HF driver dimensions:	1"	1"	1"	1"	1"	1"	1"	1"	1"	1"
HF driver brand:	BMS	BMS	BMS	BMS	BMS	BMS	BMS	BMS	BMS	BMS
Dispersion (H x V):	90 ° x 50 °	90 ° x 50 °	90 ° x 50 °	90 ° x 50 °	90 ° x 50 °	90 ° x 50 °	90 ° x 50 °	90 ° x 50 °	90 ° x 50 °	90 ° x 50 °
Load rating (RMS):	250 W	400 W	300 W	400 W	500 W	300 W	500 W	300 W	500 W	500W
Peak power:	500W	800W	600 W	800 W	1000W	600 W	1000 W	600 W	1000 W	1000 W
Frequency response:	70 - 20000 Hz	58 - 20000 Hz	65 - 20000 Hz	58 - 20000 Hz	50 - 20000 Hz	70 - 20000 Hz	58 - 20000 Hz	65 - 20000 Hz	58 - 20000 Hz	50 - 20000 Hz
SPL (1W/1m):	95 dB	99 dB	96 dB	99 dB	100 dB	-	-	-	-	-
Max. SPL (peak):	119 dB	125 dB	121 dB	125 dB	127 dB	125 dB	131 dB	127 dB	131 dB	133 dB
Impedance:	8 Ohm(s)	8 Ohm(s)	8 Ohm(s)	8 Ohm(s)	8 Ohm(s)	-	-	-	-	-
Loudspeaker inputs:	1	1	1	1	1	-	-	-	-	-
Inputs:	Speakon compatible	Speakon compatible	Speakon compatible	Speakon compatible	Speakon compatible	2 x Line/Mic In on XLR, 6.3 mm Jack / 1 x Line Out on XLR	2 x Line/Mic In on XLR, 6.3 mm Jack / 1 x Line Out on XLR	2 x Line/Mic In on XLR, 6.3 mm Jack / 1 x Line Out on XLR	2 x Line/Mic In on XLR, 6.3 mm Jack / 1 x Line Out on XLR	2 x Line/Mic In on XLR, 6.3 mm Jack / 1 x Line Out on XLR
Cabinet material:	12 mm Plywood	12 mm Plywood	12 mm Plywood	15 mm Plywood	15 mm Plywood	12 mm Plywood	12 mm Plywood	12 mm Plywood	15 mm Plywood	15 mm Plywood
Cabinet surface:	Polyurea	Polyurea	Polyurea	Polyurea	Polyurea	Polyurea	Polyurea	Polyurea	Polyurea	Polyurea
Width:	270 mm	270 mm	325 mm	390 mm	480 mm	270 mm	270 mm	325 mm	390 mm	480 mm
Height:	457 mm	756 mm	527 mm	627 mm	737 mm	457 mm	756 mm	527 mm	627 mm	737 mm
Depth:	290 mm	290 mm	308 mm	377 mm	455 mm	290 mm	290 mm	308 mm	377 mm	455 mm
Weight:	9.9 kg	19.3 kg	11.5 kg	19.4 kg	25.7 kg	10.5 kg	20.5 kg	12.7 kg	20.1 kg	26.8 kg

SPECIFICATIONS SUBWOOFERS:

Art. No.:	LDESUB15G3	LDESUB18G3	LDESUB15AG3	LDESUB18AG3
Product type:	PA subwoofer	PA subwoofer	PA subwoofer	PA subwoofer
Type:	passive	passive	active	active
Low/mid driver dimensions:	15"	18"	15"	18"
Load rating (RMS):	600 W	800 W	450 W	800 W
Peak power:	1200 W	1600 W	900 W	1600W
Frequency response:	40 - 200 Hz	35 - 200 Hz	40 - 200 Hz	35 - 200 Hz
Max. SPL (peak):	127 dB	129 dB	133 dB	135 dB
Controls:	-	-	Main Level, Mode	Main Level, Mode
Inputs:	1	1	2	2
Input connectors:	Speakon compatible	Speakon compatible	6.3 mm Jack, XLR	6.3 mm Jack, XLR
Cabinet material:	18 mm Plywood	18 mm Plywood	18 mm Plywood	18 mm Plywood
Cabinet surface:	Polyurea	Polyurea	Polyurea	Polyurea
Width:	576 mm	677 mm	576 mm	677 mm
Height:	477 mm	547 mm	477 mm	547 mm
Depth:	624 mm	740 mm	624 mm	740 mm
Weight:	29,7 kg	40.6 kg	31.9 kg	42.6 kg



LOUNGE



EVENT



POWER

**STINGER
SETS** 



IMPACT



GALA

Available in a variety of subwoofer and satellite configurations, STINGER Sets are the perfect loudspeaker packages for music and speech. From rehearsal rooms and small-scale gigs to gala events and demanding outdoor sound reinforcement requiring extra low end there is a STINGER speaker set for you. Providing dynamic music reproduction with punch and clarity as well as excellent speech intelligibility, these loudspeaker packages come in powered and passive versions including all the necessary cables, speaker poles, protective covers and castor boards for easy subwoofer transport. Whether you are playing a club gig, performing at a private function or street festival, STINGER Sets have got you and your audience covered.



LOUNGE SET

2 x 8" PA SPEAKER | 1 x 15" SUBWOOFER

Providing easy portability, this compact set is terrific for small gigs and functions that require excellent music and speech reinforcement.

Applications:

DJs | solo entertainers | singer-songwriters | private functions

Audience Size*:

150 music | 200 speech

PASSIVE SET

LDEBSETLOUNGE

- 2 x STINGER 8 G3 (LDEB82G3)
- 1 x STINGER SUB 15 G3 (LDESUB15G3)
- 1 x POWER AMP RACK DSP 45 K (LDDSP45KRACK)
- 2 x GRAVITY SSP WB SET 1 (GSSPWBSSET1)
- 3 x ADAM HALL CABLES K 4 S 425 SS 1000 (K4S425SS1000)
- 1 x STINGER SUB 15 G3 CB (LDESUB15G3CB)
- 2 x STINGER 8 G3 PC (LDEB82G3PC)
- 1 x STINGER SUB 15 G3 PC (LDESUB15G3PC)

ACTIVE SET

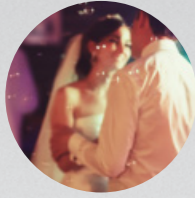
LDEBSETLOUNGEA

- 2 x STINGER 8 A G3 (LDEB82AG3)
- 1 x STINGER SUB 15 A G3 (LDESUB15AG3)
- 2 x GRAVITY SSP WB SET 1 (GSSPWBSSET1)
- 2 x ADAM HALL CABLES K4 MMF 1000 (K4MMF1000)
- 1 x STINGER SUB 15 G3 CB (LDESUB15G3CB)
- 2 x STINGER 8 G3 PC (LDEB82G3PC)
- 1 x STINGER SUB 15 G3 PC (LDESUB15G3PC)



Sets include cables, speaker poles, slip covers and castor boards.

*NOTE: Audience size specifications are approximate only. The actual numbers may vary depending on room acoustics and environment.



EVENT SET

2 x 10" PA SPEAKER | 2 x 15" SUBWOOFER

This set is the perfect all-round package for small to medium-sized gigs and functions providing a tight and punchy low end from the two subwoofers.

Applications:

small bands | DJs | private functions

Audience Size*:

200 music | 300 speech

PASSIVE SET

LDEBSETEVENT

- 2 x STINGER 10 G3 (LDEB102G3)
- 2 x STINGER SUB 15 G3 (LDESUB15G3)
- 1 x POWER AMP RACK DSP 45 K (LDDSP45KRACK)
- 2 x GRAVITY SP 2342 B (GSP2342B)
- 2 x ADAM HALL CABLES K 4 S 425 SS 1000 (K4S425SS1000)
- 2 x ADAM HALL CABLES K 4 S 225 SS 0200 (K4S215SS0200)
- 2 x STINGER 10 G3 PC (LDEB102G3PC)
- 2 x STINGER SUB 15 G3 PC (LDESUB15G3PC)
- 2 x STINGER SUB 15 G3 CB (LDESUB15G3CB)

ACTIVE SET

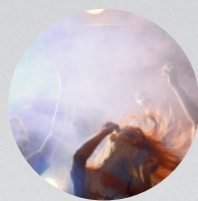
LDEBSETEVENTA

- 2 x STINGER 10 A G3 (LDEB102AG3)
- 2 x STINGER SUB 15 A G3 (LDESUB15AG3)
- 2 x GRAVITY SP 2342 B (GSP2342B)
- 2 x ADAM HALL CABLES 8101 PSDT 0300 (8101PSDT0300)
- 2 x STINGER 10 G3 PC (LDEB102G3PC)
- 2 x STINGER SUB 15 G3 PC (LDESUB15G3PC)
- 2 x STINGER SUB 15 G3 CB (LDESUB15G3CB)



Sets include cables, speaker poles, slip covers and castor boards.

*NOTE: Audience size specifications are approximate only. The actual numbers may vary depending on room acoustics and environment.



POWER SET

2 x 12" PA SPEAKER | 2 x 18" SUBWOOFER

Excellent for live clubs and touring bands, this set is a superb choice wherever highly dynamic music reinforcement with plenty of power and punch is of prime importance.

Applications:

bands | live clubs | large private functions | corporate events | AV presentations

Audience Size*:

250 music | 350 speech

PASSIVE SET

LDEBSETPOWER

- 2 x STINGER 12 G3 (LDEB122G3)
- 2 x STINGER SUB 18 G3 (LDESUB18G3)
- 1 x POWER AMP RACK DSP 45 K (LDDSP45KRACK)
- 2 x GRAVITY SP 2342 B (GSP2342B)
- 2 x ADAM HALL CABLES K 4 S 425 SS 1000 (K4S425SS1000)
- 2 x ADAM HALL CABLES K 4 S 225 SS 0200 (K4S215SS0200)
- 2 x STINGER 12 G3 PC (LDEB122G3PC)
- 2 x STINGER SUB 18 G3 PC (LDESUB18G3PC)

ACTIVE SET

LDEBSETPOWERA

- 2 x STINGER 12 A G3 (LDEB122AG3)
- 2 x STINGER SUB 18 A G3 (LDESUB18AG3)
- 2 x GRAVITY SP 2342 B (GSP2342B)
- 2 x STINGER SUB 18 G3 CB (LDESUB18G3CB)
- 2 x ADAM HALL CABLES 8101 PSDT 0300 (8101PSDT0300)
- 2 x STINGER 12 G3 PC (LDEB122G3PC)
- 2 x STINGER SUB 18 G3 PC (LDESUB18G3PC)



Sets include cables, speaker poles, slip covers and castor boards.

*NOTE: Audience size specifications are approximate only. The actual numbers may vary depending on room acoustics and environment.



IMPACT SET

2 x 15" PA SPEAKER | 4 x 18" SUBWOOFER

Delivering a massive low-end with punch and clarity, the Impact Set is ideal for outdoor sound reinforcement. With a quartet of subwoofers and two 15" tops, it easily covers medium-sized gigs at town fairs, street festivals and in marquees.

Applications:

outdoor sound reinforcement for bands | DJs | large private functions

Audience Size*:

300 music | 400 speech

PASSIVE SET

LDEBSETIMPACT

- 2 x STINGER 15 G3 (LDEB152G3)
- 4 x STINGER SUB 18 G3 (LDESUB18G3)
- 1 x POWER AMP RACK DSP 45 K (LDDSP45KRACK)
- 2 x GRAVITY SP 2342 B (GSP2342B)
- 2 x ADAM HALL CABLES K 4 S 425 SS 1000 (K4S425SS1000)
- 4 x ADAM HALL CABLES K 4 S 225 SS 0200 (K4S215SS0200)
- 2 x STINGER 15 G3 PC (LDEB152G3PC)
- 4 x STINGER SUB 18 G3 PC (LDESUB18G3PC)
- 4 x STINGER SUB 18 G3 CB (LDESUB18G3CB)

ACTIVE SET

LDEBSETIMPACTA

- 2 x STINGER 15 A G3 (LDEB152AG3)
- 4 x STINGER SUB 18 AG3 (LDESUB18AG3)
- 2 x GRAVITY SP 2342 B (GSP2342B)
- 4 x ADAM HALL CABLES 8101 PSDT 0150 (8101PSDT0150)
- 2 x STINGER 15 G3 PC (LDEB152G3PC)
- 4 x STINGER SUB 18 G3 PC (LDESUB18G3PC)
- 4 x STINGER SUB 18 G3 CB (LDESUB18G3CB)



Sets include cables, speaker poles, slip covers and castor boards.

*NOTE: Audience size specifications are approximate only. The actual numbers may vary depending on room acoustics and environment.



GALA SET

2 x DOUBLE 8" PA SPEAKER | 2 x 18" SUBWOOFER

Including a pair of slim, low-profile satellites and two subwoofers, this set is a great option for events that require excellent speech intelligibility and extended coverage.

Applications:

gala events | corporate conferences | large private functions

Audience Size*:

250 music | 350 speech

PASSIVE SET

LDEBSETGALA

- 2 x STINGER 28 G3 (LDEB282G3)
- 2 x STINGER SUB 18 G3 (LDESUB18G3)
- 1 x POWER AMP RACK DSP 45 K (LDDSP45KRACK)
- 2 x GRAVITY SP 2342 B (GSP2342B)
- 2 x ADAM HALL CABLES K 4 S 425 SS 1000 (K4S425SS1000)
- 2 x ADAM HALL CABLES K 4 S 225 SS 0200 (K4S215SS0200)
- 2 x STINGER 28 G3 PC (LDEB282G3PC)
- 2 x STINGER SUB 18 G3 PC (LDESUB18G3PC)
- 2 x STINGER SUB 18 G3 CB (LDESUB18G3CB)

ACTIVE SET

LDEBSETGALAA

- 2 x STINGER 28 A G3 (LDEB282AG3)
- 2 x STINGER SUB 18 A G3 (LDESUB18AG3)
- 2 x GRAVITY SP 2342 B (GSP2342B)
- 2 x ADAM HALL CABLES 8101 PSDT 0300 (8101PSDT0300)
- 2 x STINGER 28 G3 PC (LDEB282G3PC)
- 2 x STINGER SUB 18 G3 PC (LDESUB18G3PC)
- 2 x STINGER SUB 18 G3 CB (LDESUB18G3CB)



Sets include cables, speaker poles, slip covers and castor boards.

*NOTE: Audience size specifications are approximate only. The actual numbers may vary depending on room acoustics and environment.

welcome to the **digital age.**

DSP SERIES PROFESSIONAL DSP POWER AMPLIFIERS

The LD Systems® DSP power amps are professional 4-channel power amplifier with extensive DSP control. Designed for demanding large-scale sound reinforcement and concert-quality performance, they deliver a massive 1,200 watts per channel and 2 x 2,400 watts bridged. The high-efficiency Class H topology and switch mode power supply with power factor correction (PFC) provide a wide dynamic range and excellent transient response.

These amps feature comprehensive protection circuitry including power-up, DC, overcurrent, thermal and short circuit protection plus current and clip limiters to prevent SMPS overload and loudspeaker damage. Together with a pair of temperature controlled fans, they ensure exceptional reliability in the most demanding applications. The 24-bit DSP allows precise control with FIR and IIR filters, parametric EQ, crossover, delay, RMS and peak limiter functions. User configurable loudspeaker presets with password protection enable fast setup.

For optimal speaker performance and safe operation the DSP power amps are equipped with an LD Systems® loudspeaker preset library, and the included software enables computer control and monitoring.



DSP 44 K RACK
PROFESSIONAL DSP POWER AMPLIFIER
WITH DANTE™ INTERFACE

DSP 45 K RACK
PROFESSIONAL DSP POWER AMPLIFIER

- ✓ 4-channel power amplifier with DSP control / + Dante™ enabled (DSP 44 K)
- ✓ 4 x 1,200 watts @ 4 and 2 ohms, 2 x 2,400 watts bridged @ 4 ohms
- ✓ 10 Hz – 22 kHz frequency response with 120 dB dynamic range
- ✓ 24-bit/48kHz DSP with FIR and IIR filters, parametric EQ, crossover, delay, RMS and peak limiters
- ✓ DC, overcurrent, thermal and short circuit protection, soft start, clip and SMPS overload limiters
- ✓ Dual temperature-controlled fans
- ✓ Power factor correction (PFC)
- ✓ Menu driven 4-line display with rotary encoder and security lock
- ✓ Includes control and monitoring software and LD Systems® Loudspeaker Preset Library

SPECIFICATIONS:

Art.No.:	LDDSP44KRACK	LDDSP45KRACK
Product type:	Power Amplifier	Power Amplifier
Type:	4-channel	4-channel
Rated output power (1kHz @ 2 Ohms):	4 x 1200 W	4 x 1200 W
Rated output power (1kHz @ 4 Ohms):	4 x 1200 W	4 x 1200 W
Rated output power (1kHz @ 8 Ohms):	4 x 675 W	4 x 675 W
Rated output power (1kHz @ 4 Ohms, bridged):	2 x 2400 W	2 x 2400 W
High Z 70 V rms / 100 V peak:	4 x 1200 W	4 x 1200 W
High Z 100 V rms / 140 V peak:	2 x 2400 W	2 x 2400 W
Output circuitry:	Class H	Class H
Frequency response:	10 Hz - 22 kHz	10 Hz - 22 kHz
THD:	< 0.05 % @ 1 kHz	< 0.05 % @ 1 kHz
Signal-to-noise ratio:	104 dB	104 dB
Protection circuits:	clip limiter , DC protection , Multiband limiter , over-current , RMS speaker limiter , short circuit , soft start , thermal protection	clip limiter , DC protection , Multiband limiter , over-current , RMS speaker limiter , short circuit , soft start , thermal protection
Controls:	Direct access buttons , Exit / lock button , On / off switch , Push encoder	Direct access buttons , Exit / lock button , On / off switch , Push encoder
Indicators:	LC display	LC display
Line inputs:	4	4
Line input connectors:	Neutrik XLR	Neutrik XLR
Line outputs:	4	4
Line output connectors:	Neutrik XLR	Neutrik XLR
Loudspeaker outputs:	4	4
Speaker output connections:	Speakon	Speakon
Cooling:	2 fans, temperature controlled	2 fans, temperature controlled
Maximum Ambient Temperature:	0 - 40°	0 - 40°
Operating voltage:	220 V AC - 240 V AC, 50-60 Hz , Switching Power Supply	220 V AC - 240 V AC, 50-60 Hz , Switching Power Supply
Relative Humidity:	< 80% (non-condensing)	< 80% (non-condensing)
Power consumption @ full load:	1900 W	1900 W
Dimensions (W x H x D):	482 mm x 89 mm x 320 mm	482 mm x 89 mm x 320 mm
Weight:	17.9 kg	17.9 kg
Features:	19" / 2 U , Active Power Factor Correction , Computer control software, Dante interface , DSP controlled , Ethernet , LD Systems loudspeaker preset library , USB front port	19" / 2 U , Active Power Factor Correction , Computer control software, DSP controlled, Ethernet, LD Systems loudspeaker preset library , USB front port

Art. No.:	LDDSP44KPB/ LDDSP45KPB
Product type:	19" Patchbay
Type:	4-channel
Connectors:	2 x RJ45 (LDDSP45KPB only 1 x RJ45), 4 x Neutrik Speakon, 4 x Neutrik XLR Female, 2 x Neutrik XLR Male
Material / Surface:	Steel, powder coated
Dimensions (W x H x D):	19" / 1 HE, 483 mm x 44,5 mm x 110 mm
Weight:	1.5 kg

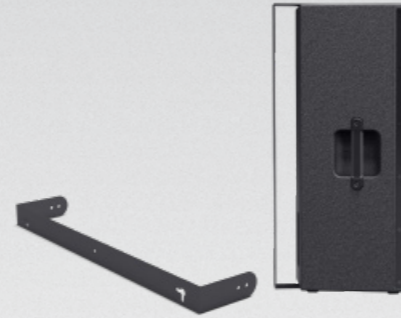
WORKHORSE WALL AND TRUSS MOUNT ACCESSORIES



STINGER 8 G3 WMB
LDEB82G3WMB
SWIVEL WALL MOUNT
FOR STINGER 8"



STINGER 8 (A)G3 WMB 1
LDEB82G3WMB1 / LDEB82AG3WMB1
TILT AND SWIVEL WALL MOUNT
FOR STINGER 8"



STINGER 28 G3 WMB
LDEB282G3WMB
SWIVEL WALL MOUNT
FOR STINGER 2 x 8"



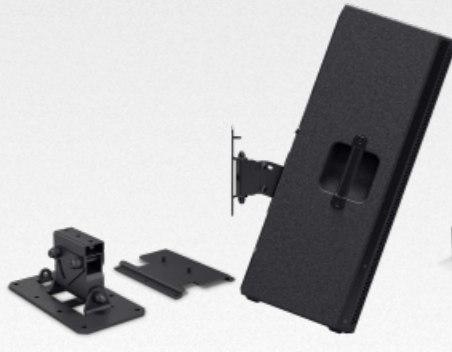
STINGER G3 WMB
LDEBG3WMB
SWIVEL WALL MOUNT
FOR STINGER 12" AND STINGER 15"



STINGER G3 WMB 1
LDEBG3WMB1
TILT AND SWIVEL WALL MOUNT
FOR STINGER 12" AND STINGER 15"



STINGER G3 SCP
LDEBG3SCP
TRUSS MOUNT CLAMP SET
FOR STINGER 8" AND STINGER 10"



STINGER 28 (A)G3 WMB 1
GSPWMBS30B / LDEB282AG3WMB1
TILT AND SWIVEL WALL MOUNT
FOR STINGER 2 x 8" ACTIVE /PASSIVE



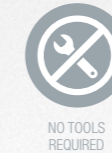
STINGER 10 G3 WMB
LDEB102G3WMB
SWIVEL WALL AND CEILING MOUNT
FOR STINGER 10"



STINGER 10 G3 WMB 1
LDEB102G3WMB1
TILT AND SWIVEL WALL MOUNT
FOR STINGER 10"



STINGER G3 TMB
LDEBG3TMB
TRUSS MOUNT BRACKET FOR STINGER 12" AND STINGER 15"



NO TOOLS
REQUIRED



3-POINT
SUSPENSION



AUTOMATIC
LOCKING



2-HAND
SAFETY RELEASE



PAN & TILT



ADJUSTABLE
WHILE MOUNTED

WORKHORSE TRANSPORT ACCESSORIES



STINGER 8 G3 PC

LDEB82G3PC
PROTECTIVE COVER FOR STINGER 8"



STINGER 28 G3 PC

LDEB282G3PC
PROTECTIVE COVER FOR STINGER 2 x 8"



STINGER 10 G3 PC

LDEB102G3PC
PROTECTIVE COVER FOR STINGER 10"



STINGER 12 G3 PC

LDEB122G3PC
PROTECTIVE COVER FOR STINGER 12"



STINGER 15 G3 PC

LDEB152G3PC
PROTECTIVE COVER FOR STINGER 15"



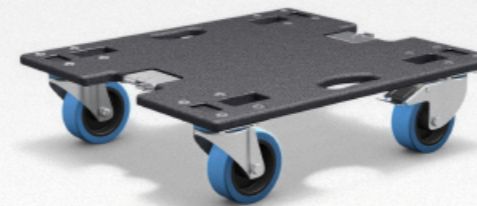
STINGER SUB 15 G3 PC

LDESUB15G3PC
PROTECTIVE COVER FOR STINGER SUB 15"



STINGER SUB 18 G3 PC

LDESUB18G3PC
PROTECTIVE COVER FOR STINGER SUB 18"



STINGER SUB 15 G3 CB

LDESUB15G3CB
CASTOR BOARD FOR STINGER SUB 15"



STINGER SUB 18 G3 CB

LDESUB18G3CB
CASTOR BOARD FOR STINGER SUB 18"



STINGER® G3 SERIES
MULTIFUNCTIONAL **PA SPEAKERS & SUBWOOFERS**



workhorse.

STINGER® G3 SERIES
MULTIFUNCTIONAL **PA SPEAKERS**
& **SUBWOOFERS**



MEET YOUR NEW EMPLOYEE OF THE YEAR:
LD-SYSTEMS.COM/STINGERG3

