

Neets Control – EcHo Plus

8-Button Keypad with Remote Monitoring



Neets Control – EcHo Plus provides uniform AV control interface in all rooms through an 8-Button Keypad with built-in controller.

For installations with multiple rooms, the included Central Control software makes it possible to monitor rooms with EcHo Plus installed from a central computer.

Features

8-Button AV control system with Remote Monitoring

The world's most compact AV control system – no external processors required

8 Freely configurable keypad buttons

Provides uniform AV control interface in all rooms and all 8 buttons can be configured for any function

1 Bi-directional RS-232 port

Used for controlling projectors, displays, amplifiers & other AV devices with feedback functionality

1 Uni-directional RS-232 or 1 IR port

Used for sending commands to projectors or other AV devices using serial or infrared communication

1 Ethernet port

Used for controlling two LAN devices and connection to Central Control and Project Designer

3 General Purpose I/O ports

Used for input/output control of relays, switches and sensors

1 NEB port (Neets Expansion Bus)

Add 2 additional devices - choose between Keypad, Level Control or Port Expansion (serial and I/O).

1 front USB port

Used for easy system configuration, uploading and downloading project files, service and maintenance

iOS/Android support

Controlled through iOS/Android touch devices – fixed user interface

Email notifications and warnings

Email notification on lamp/filter hours and warnings

Included: Configuration through our free and no-license software: Neets Project Designer

Neets Control – EcHo Plus

8-Button Keypad with Remote Monitoring

Neets Central Control features:

Remote monitoring

Monitor rooms with EcHo Plus (or Neets Control OsCar/ SieRRa II) installed from one central location.

Lamp & Filter hours feedback

Get status on lamp and filter hours for your projectors for preventive maintenance

Grouping rooms, floors or levels

Control groups or individual rooms over network – e.g. one “POWER OFF” command for all rooms

Remote AV support

From AV/IT support you can immediately get an overview of a room and test the control commands

Software included free-of-charge

Neets Central Control software is a free-of-charge and no-license software

Technical Specifications

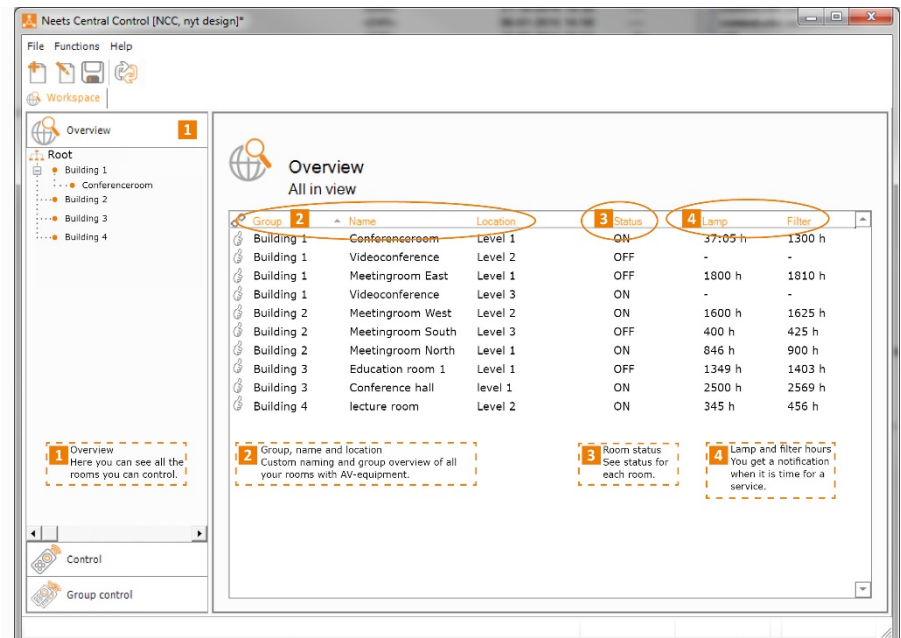
Communication ports:
 1 x RS-232 (TX and RX)
 Baud: 1200 – 115200
 Data Bit: 7/8
 Parity: None, Even, Odd
 Stop Bit: 1/1.5/2

1 x RS-232 or IR (TX only)
 Baud: 1200 – 115200
 Parity: None, even, odd
 Stop Bit: 1/1.5/2

IR:
 Transmit
 381 Hz – 500 kHz
 Devices: 2

1 x Ethernet port
 Speed: 10/100 Mbit
 auto-detect
 Devices: 2

3 x I/Os (GPIO)
 Input:
 Sense Low: <1 VDC
 Sense High: >4 VDC



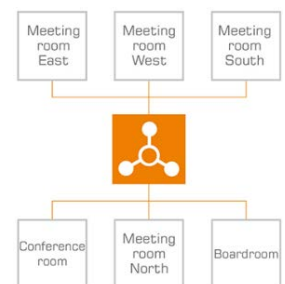
1 Overview
Here you can see all the rooms you can control.

2 Group, name and location
Custom naming and group overview of all your rooms with AV-equipment.

3 Room status
See status for each room.

4 Lamp and filter hours
You get a notification when it is time for a service.

Control your AV-installation with the free Neets App.



Output:
 Type: Open drain
 Max Voltage: 24 VDC
 Max Current: 0.5 A

Neets Expansion Bus (NEB)
 12 V (0.3 A) output
 2 devices

Included in box
 12 V PSU (110- 230V AC)

Dimensions (without frame) (EU):
 Width: 55 mm
 Height: 55 mm
 Depth: 17 mm

Dimensions (without frame) (DK):
 Width: 72 mm
 Height: 45 mm
 Depth: 17 mm

Dimensions (without frame) (US):
 Width: 45 mm
 Height: 105 mm
 Depth: 24 mm

Weight (EU,DK,US)
 90 g

Compliance:
 Approval: CE, FCC (part 15, class A)
 IEC/ EN 61000-6-1
 IEC/ EN 61000-6-2

Product item numbers:
 310-0152:
 Neets Control – EcHo Plus,
 EU - Polar white
 310-0252:
 Neets Control – EcHo Plus,
 DK - Polar white
 310-0452:
 Neets Control – EcHo Plus,
 US - Polar white